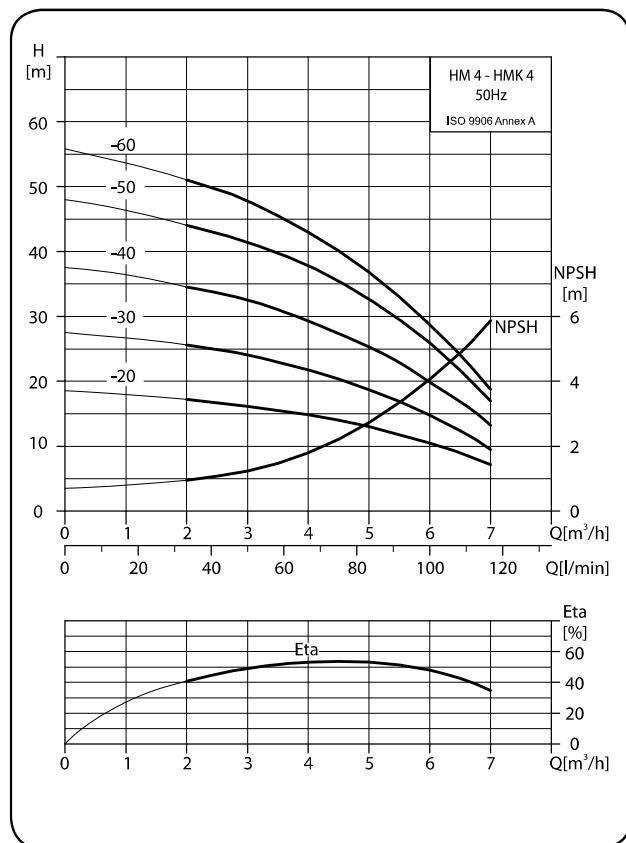
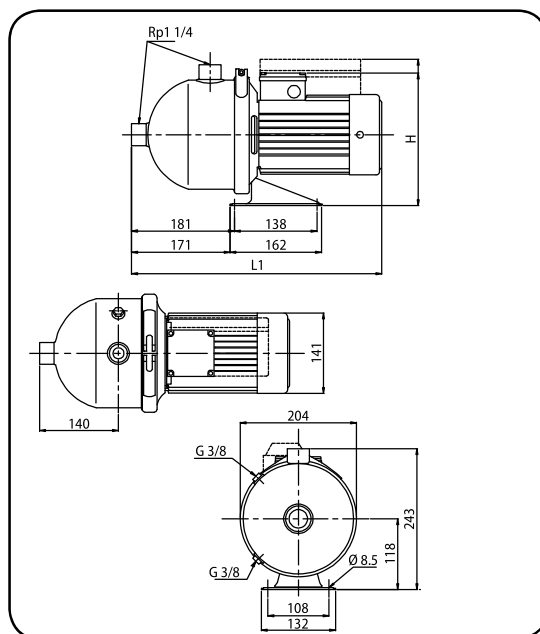


Performance curves



HM 4 - HMK 4

Installation sketch



Dimensions and weights

Model	Dimension [mm]				Weight [kg]
	1-Phase		3-Phase		
	L1	H	L1	H	
HM 4-20 / HMK 4-20	403	255	403	233	9.6
HM 4-30 / HMK 4-30	403	255	403	233	9.9
HM 4-40 / HMK 4-40	403	255	403	233	10.6
HM 4-50 / HMK 4-50	441	255	441	233	12.1
HM 4-60 / HMK 4-60	441	255	441	233	12.3

Electrical data, 2850 min⁻¹

Pump type	1Φ 220-240V			3Φ Δ220-240V / Y 380-415V		
	I 1/1 [A]	P 1 [W]	P 2 [W]	I 1/1 [A]	P 1 [W]	P 2 [W]
HM/HMK 4-20	2.7 - 2.6	580	450	2.5 - 2.9 / 1.5 - 1.7	660	515
HM/HMK 4-30	3.9 - 3.7	820	635	2.8 - 3.0 / 1.6 - 1.7	850	650
HM/HMK 4-40	4.6 - 4.4	1000	765	3.3 - 3.5 / 1.9 - 2.0	1060	810
HM/HMK 4-50	5.8 - 5.5	1240	1005	4.2 - 4.5 / 2.4 - 2.6	1310	1060
HM/HMK 4-60	7.1 - 6.9	1510	1210	5.2 - 5.6 / 3.0 - 3.3	1550	1230